



JETTA

INSPECTION & INSTALLATION INSTRUCTIONS

DADOquartz® COLLECTION

(800) 288-7771



WWW.JETTACORP.COM

TABLE OF CONTENTS

- GENERAL INSTALLATION INSTRUCTIONS 3
 - INSPECTION:..... 3
- GENERAL INSTALLATION INSTRUCTIONS 3
 - ROUGH-IN: 4
 - SITE PREPERATION: 4
 - PREPARATIONS: 4
- FREESTANDING INSTALLATION INSTRUCTIONS 5

GENERAL INSTALLATION INSTRUCTIONS**INSPECTION:****IMPORTANT: READ AND FOLLOW ALL INSTRUCTIONS PRIOR TO INSTALLATION AND SAVE THESE INSTRUCTIONS FOR FUTURE USE.**

Inspecting of this product is the responsibility of person receiving the tub and should be done immediately upon receipt.

The person inspecting the tub is responsible for ensuring that the unit is free of defect or damage.

Jetta is not responsible for failure or damage that should have been discovered during proper inspection. Transit damage is the responsibility of the carrier. If the unit is damaged, the shipment should be accepted, and damage or possible damage noted on the bill of lading- recipient should notify Jetta of the damage (including pictures) **immediately**. Even Minor damage must be reported to Jetta within 48 hours of delivery and prior to being delivered to job site.

Delivery of the tub to a job site will be seen as acceptance of quality.

Any damage that occurs at the job site or during installation is the responsibility of the installer, after installation is the responsibility of the product owner.

Immediately upon receiving your Jetta DADOquartz® bath, inspect it thoroughly for accuracy or damage.

- Check to ensure the bathtub is the unit you ordered and that its dimensions and drain position correspond to your plans.
- To prevent scratches, always protect the surface.
- Check color match before installation.
- Please note that shrinkage lines, air holes, casting marks and blemishes on the underside of the product (where they cannot be seen when turned upright) do not adversely affect performance or aesthetics and are not considered defects.
- If there is protective plastic sheet covering the surface of your bathtub, it should only be removed for inspection and replaced until the installation is complete. When necessary during the installation process the plastic can be peeled back to install the drain. The plastic should also be peeled back in areas where it could become snagged during the installation process.
- Do not sit on the edge of the bathtub.
- Nothing should be placed in bath that would scratch or break it.
- Workmen in bath should be in stocking feet only.

IMPORTANT: MANUFACTURER WILL NOT BE LIABLE FOR THE REMOVAL OR RE-INSTALLATION OF THE BATHTUB IF THERE IS A FAILURE TO FOLLOW THE MANUFACTURERS RECOMMENDED PRE-INSTALLATION AND INSTALLATION PROCEDURES, FAILURE TO FOLLOW THE MANUFACTURERS RECOMMENDATIONS COULD RESULT IN THE WARRANTY BEING VOIDED.

GENERAL INSTALLATION INSTRUCTIONS

ROUGH-IN:

Test fit the tub and verify dimensions. Carefully level the unit using shims if needed.

SITE PREPERATION:

- The site should be cleared of debris and vacuumed. This will ensure that the bathtub is leveled properly.
- Check if the floor is leveled and solid. The level should be in a range that can be compensated for using shims. An average sized bathtub can weigh as much as 1000 lbs when full, the floor must be able to support this weight.
- An opening of 6" x 6" should be provided in the floor for the bathtub drain and overflow. Make sure there are no obstructions in this space.
- The plumbing rough-in for both the drain and the supply lines should be completed by a licensed plumber before the bathtub is moved into its final position.

PREPARATIONS:

Before installing a new DADOquartz® bathtub, we strongly recommend following the installation check list and hiring a certified plumber to handle the installation.

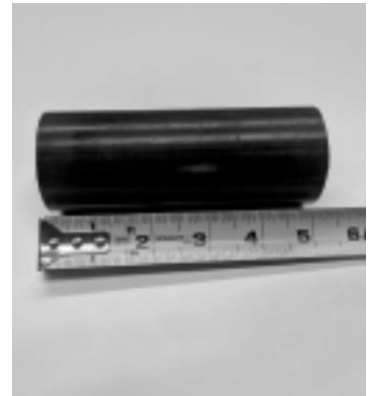
- Visually inspect the bathtub to make sure it has not been damaged during transport. **In case of damage, do not proceed with the installation.**
- Make sure the bathtub is the model that you ordered, that its dimensions are correct, and that the location of the drain corresponds to the plans.
- To protect the bathtub during installation, cut a piece cardboard or other protective material and place it in the bottom of the bathtub.

GENERAL INSTALLATION INSTRUCTIONS

INSTALLATION OF FREESTANDING BATHTUBS (ELEMENT) AND DRAIN

Note: For ease of installation, Jetta recommends using our Above the Floor Drain Kit (Drain Kit) . Adherence to all plumbing codes is the responsibility of a licensed plumber.

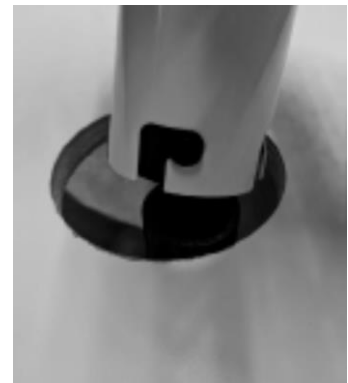
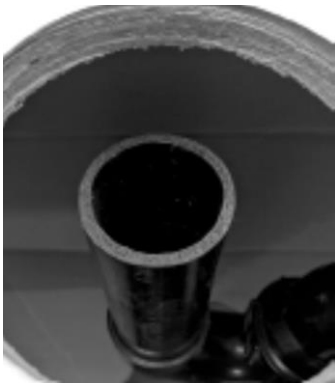
1. Temporarily position the bathtub in the desired location, ensuring that the drain hole is aligned to the floor drain and then draw the contour of the bathtub on the ground. If the floor drain is not installed yet, trace its location through the hole of the bathtub, then move the bathtub to a safe place, to install floor drain according to guidelines. Reposition the bathtub and ensure that the trace lines are followed.



2. Drill a 4" hole in your wooden subfloor or leave a 6"x 6" open space in your concrete slab.

3. Measure the distance from the inside of the P-trap to the top of the floor or slab. (P-Trap not included)

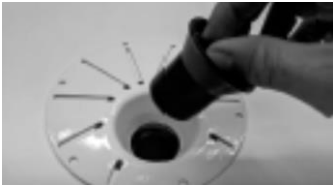
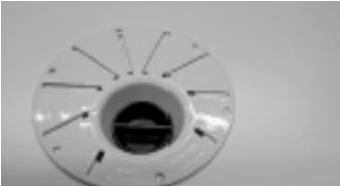
4. Cut the ABS or PVC 1 1/2" pipe 3 inches shorter than the distance between the floor/slab and the P-trap.



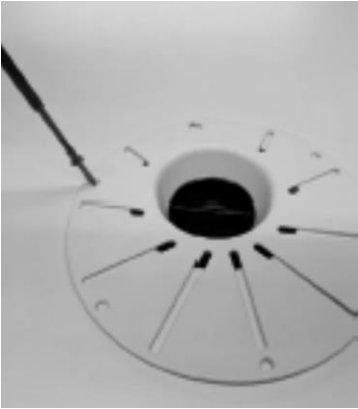
5. Apply glue to the outside of the ABS or PVC 1 1/2" pipe and to the inside of the P-trap. Insert the pipe into the P-trap.

6. Apply glue to the outside of the ABS or PVC 1 1/2" pipe and to the inside of the Drain kit insert.

7. Slide the Drain Kit on the ABS or PVC 1 1/2" pipe making sure it sits flat on the floor. *



8. Insert the Drain cap firmly into the Drain Kit.



9. Secure the Drain Kit to the subfloor/concrete with screws or cement.



1. Install your flooring surface around the opening of the Drain Kit.



11. Remove the Drain cap with a channel lock plier.



12. Apply provided lubricant inside the Drain kit. Please only proceed with this step once the pressure test has been performed, if needed.



13. Affix the appropriate tailpiece to the waste & overflow. Ensure the measurement between the base of the Drain kit and the P-trap will accommodate the tailpiece. Warning: Do not cut the brass tailpiece as this may cause leakage.



14. Apply provided lubricant halfway up the tailpiece and position the bathtub and tailpiece in line with the Drain Kit.



15. With caution, slowly insert the bathtub tailpiece into the Drain Kit.

16. Leave the bathtub in this position for at least 24 hours before use.

17. Water test the bathtub for leaks.

If unit is within the limited factory warranty, contact Jetta Corporation at (800) 288-7771 with your purchasing information on hand so we may serve you better. Visit WWW.JETTACORP.COM/FAQs for additional troubleshooting tips.